



# Adarsha Control & Automation Pvt Ltd

CE&I Solution Provider

# INTRODUCTION



A gateway to excellence in Design & Manufacturing of Electrical, Automation, Instrumentation control panels, Control room Furniture's & Sheet steel enclosures for various applications & industries.

**Adarsha Control Systems Private Limited (ACSPL)** is an IMS (9001,14001,18001)certified company since 1993 having experience in design, manufacturing & Integration of Control Panels (PLC/DCS/VFD/C&R).

**Adarsha Control & Automation Private Limited (ACAPL)** is an IMS (9001,14001,18001) certified company commenced in the year 2010, to provide value-added turn-key solutions in WWW, MMM , Food & Beverages DAE & DOS, Power management, Solar, segments.

We are associated with **Schneider Electric India Pvt. Ltd.** As

- Certified Alliance Partner EcoStruxure Plant
- Certified Alliance System Integrator Mining, Minerals & Metals
- Certified iMCC Panel Builder
- EcoXpert - Critical Power Partner
- Certified System Vendor of Belden





## Vision

To be one among the leading Automation Solution Provider and No.1 Master Alliance Integration Partner for Schneider Electric.



## Mission

To be the Leader in Automation and Process Control Systems, by providing Professional and Customized solution exceeding Customer delight through innovation and continuously upgrading our process & technical skill sets to meet the needs of both domestic and International customers

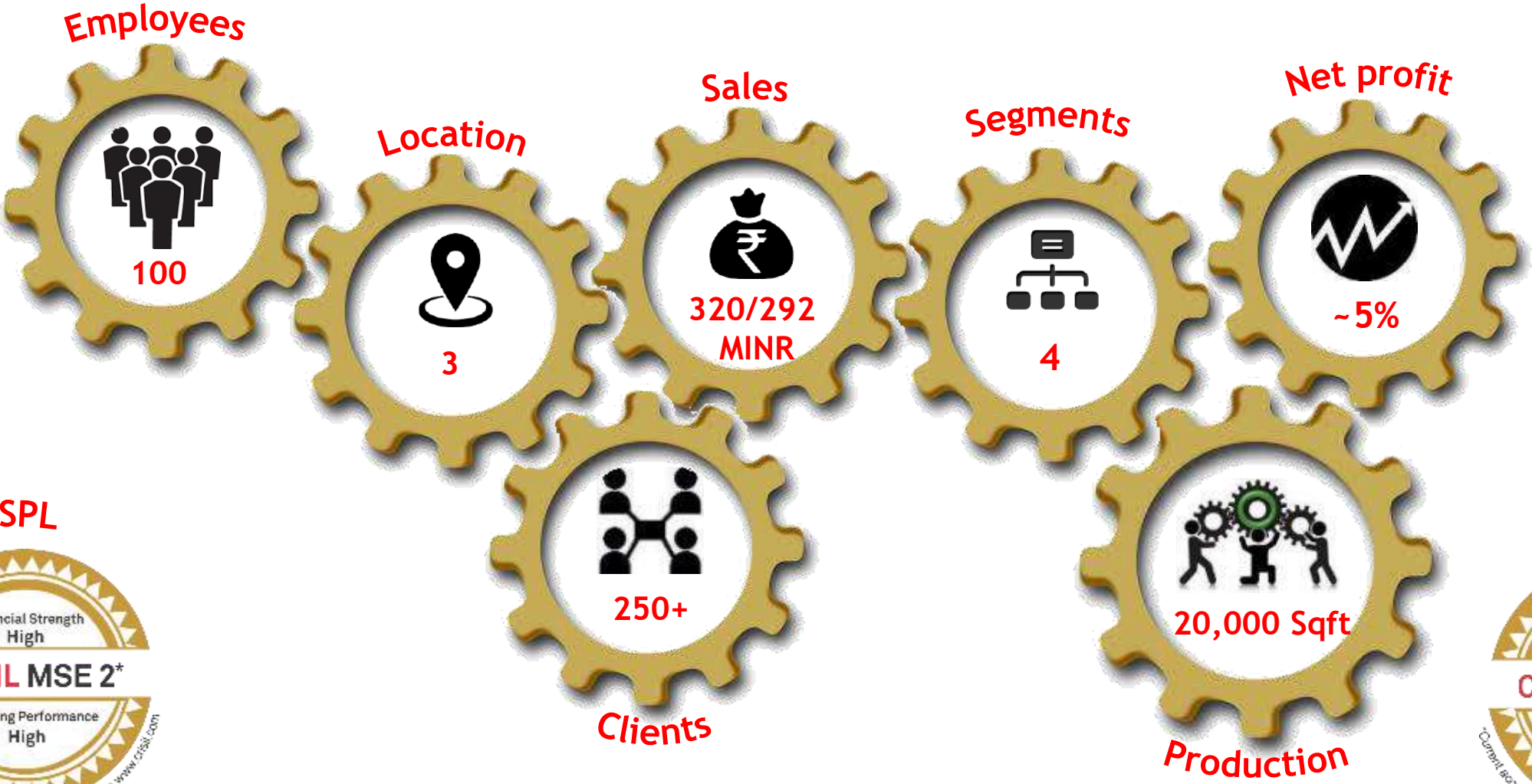
## Goal

To ensure "customer satisfaction" by making all our employees to believe and to enact as their representatives in Adarsha Control and Automation. Finally it is the synergy of excellent infrastructure set-up, focus on quality and the pride of our employees to ensure customer satisfaction that has established our leadership Brand image in the area of providing complete solutions.

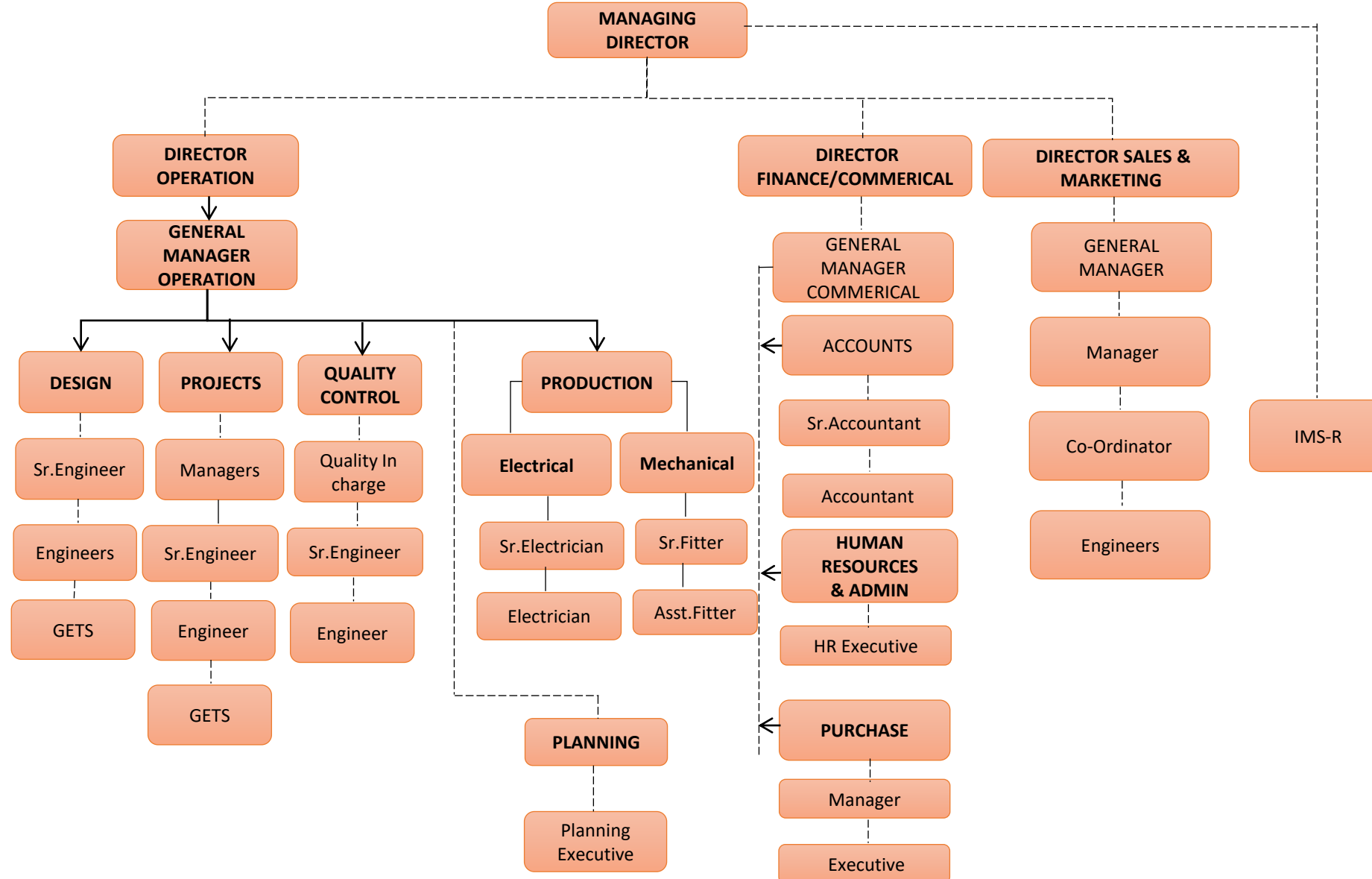




# OUR STRENGTH



# ORGANISATION CHART



## Automation System

- Standalone PLC
- HSBY PLC
- SCADA / PES
- Telemetry Radio
- RTU / Distributed IO's
- Remote Power ON system
- Wireless RTU / IO's
- Energy Management System
- VFD / Energy Saving Solution
- Solar
- Consoles & Large Wall Display
- Instrumentation Panel

## Electrical System

- PCC
- MCC – IEC61439
- iMCC
- APFC Panel
- KIOSK/MOSAIC Panel
- LCP/Junction Boxes
- VFD (LV/MV)/SS
- UPS
- LDB / MLDB
- Power Quality – AHF/Metering
- SESMIC Certified Panels

## Mechanical

- MECHANICAL WEIGHING SYSTEM
- CONTROL PANELS
- ERCONOMIC WORK STATION
- PC CONSOLES

## Services

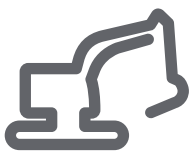
- AMC
- Turn Key Projects
- Design & Engineering
- Training
- Modernization & Up gradation

# WE ARE EXPERTISES @



- METALS, MINERALS & MINING
- WATER & WASTE WATER
- SPACE ISRO/VSSC/LPSE
- ATOMIC ENERGY (BARC/NUCLEAR POWER)
- FOOD AND BEVERAGE DAIRY
- CAPTIVE POWER PLANT
- PACKAGING
- ENERGY MANAGEMENT
- HOISTING
- MECHANICAL
- HVAC
- RENEWABLE ENERGY





# METALS MINES & MINERALS



Best in Class Project
▪ LHF - JSW
▪ D.H Conveyor - NMDC
▪ SAS - SAIL
▪ RAMCO
▪ 1 <sup>st</sup> Sch VFD - UltraTech
▪ Aditya Birla
▪ ESP Chinese SCADA - JSW

Application Expertise On	
▪ Beneficiation Plant	▪ CRM
▪ Ladle Handling Furnace	▪ ESP
▪ Caster	▪ KR Process
▪ RMHS	▪ Dust Suppression System
▪ Stacker / Re-Claimers	▪ Down Hill Conveyer
▪ Wagon Tipplers	▪ Packing Plant
▪ HDMS	

Solution Expertise On	
▪ PLC	▪ Instruments
▪ SCADA	▪ IED's
▪ VFD	▪ MCC/iMCC
▪ EMS	▪ UPS
▪ PES	▪ AMC



Key

- 1500 I/O's installed and Commissioned in 23 Hrs
- 5 KM Down hill Conveyer @ NMDC

Communication Expertise On				
▪ HSBY	▪ Device Net	▪ GSM/GPRS	▪ Modbus	▪ IEC 61850
▪ ERIO	▪ Profibus	▪ Can Open	▪ Modbus/TCPIP	▪ Ethernet IP







# WATER AND WASTE WATER



Best in Class Project
▪ OWSSB
▪ BWSSB
▪ NWSDB - Srilanka
▪ Dangote DM & WTP - Nigeria
▪ Delhi JAL Board
▪ Tunasan - Philippines
▪ CMWSSB

Application Expertise On	
▪ Zero Discharge Plant	▪ DM
▪ TTP	▪ Desalination Intake system
▪ ETP	▪ Radio Telemetry Station
▪ SRP	▪ D2O Process Solution

Solution Expertise On	
▪ PLC	▪ Instruments
▪ SCADA	▪ Transformer
▪ VFD	▪ MCC
▪ RADIO	▪ UPS
▪ PES	▪ AMC



**Key**

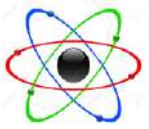
- 155 VFD panel for OWSSB
- Commissioned Entire DM plant @ Dangote Fertilizer-Nigeria from Bangalore

Communication Expertise on			
▪ HSBY	▪ Foundation Field Bus	▪ Wireless	▪ GSM/GPRS
▪ ERIO	▪ Profibus	▪ Modbus/TCPIP	▪ Ethernet IP



Bangalore Water Supply and Sewerage Board  
ಬೆಂಗಳೂರು ನೀರು ಸರಬರಾಜು ಮತ್ತು ಒಳಚರಂಡಿ ಮಂಡಳಿ





Best in Class Project	Application Expertise On		Solution Expertise On	
▪ BARC Mysore	▪ Propellant Filling System	▪ Nozzle Testing	▪ PLC	▪ Operator Console
▪ ISRO - SHAR	▪ Remote Power On	▪ Casting	▪ SCADA	▪ CCTV
▪ VSSC, Trivandrum	▪ Manual Safing	▪ Bulk Storage	▪ MCC/iMCC	▪ UPS
▪ IPRC, Mahendragiri	▪ Bogie Movement	▪ Foundation Field bus Pilot	▪ EMS	▪ TMR IOs
▪ IGCAR , Bhavani	▪ Safety System	▪ SVAB	▪ Zone 1- HMI	
	▪ Tele Command	▪ DG Synchronization		
	▪ Traction control system			

Key →

- LSTK (Elec/Automation/Instr) order worth 110 MINR
- Triple Modular Redundant Boards for DI/DO/AI and AO

Communication Expertise On			
▪ HSBY	▪ Fibre Optic NW	▪ Modbus	▪ Profibus DP / PA
▪ ERIO	▪ Foundation Field Bus	▪ Modbus TCP/IP	▪ HART





# FOOD & BEVERAGES



Best in Class Project
▪ Amul Dairy - Anand
▪ Amul Dairy - Banas
▪ GSK – Rajamundry
▪ <b>Growell-Vijaywada</b>

Application Expertise On	
▪ Intake Reception	▪ Separation
▪ Evaporation	▪ Homogenization
▪ CIP	▪ Packing Plant
▪ Pasteurization	▪ Laboratory System

Solution Expertise On
▪ PLC
▪ SCADA
▪ VFD
▪ EMS
▪ PES
▪ MCC/iMCC

➔ **Key** • **Doubling capacity Online without stopping production**

Communication Expertise On			
▪ HSBY	▪ DeviceNet	▪ Modbus	▪ Asi
▪ ERIO	▪ Ethernet IP	▪ Modbus/TCPIP	▪ CanOpen





# ELECTRICAL UTILITIES



Best in Class Project	Application Expertise On	Solution Expertise On
<ul style="list-style-type: none"> <li>CPCL</li> </ul>	<ul style="list-style-type: none"> <li>BOP</li> </ul>	<ul style="list-style-type: none"> <li>PLC</li> </ul>
<ul style="list-style-type: none"> <li>JSW – Energy</li> </ul>	<ul style="list-style-type: none"> <li>Load Shedding</li> </ul>	<ul style="list-style-type: none"> <li>SCADA</li> </ul>
<ul style="list-style-type: none"> <li>IEPL</li> </ul>	<ul style="list-style-type: none"> <li>Sub Station Automation</li> </ul>	<ul style="list-style-type: none"> <li>VFD</li> </ul>
<ul style="list-style-type: none"> <li>TATA Power</li> </ul>	<ul style="list-style-type: none"> <li>Voltage Correction using 6.6 MV Capacitors</li> </ul>	<ul style="list-style-type: none"> <li>PES</li> </ul>
	<ul style="list-style-type: none"> <li>ID Fan Energy Saving</li> </ul>	<ul style="list-style-type: none"> <li>MCC/iMCC</li> </ul>
	<ul style="list-style-type: none"> <li>ESP</li> </ul>	



Key

- 17 Sub Stations with 282 Protocols configured for Load Shedding @ CPCL (IOCL)
- 6.6 KV 6 MVAR Cap Bank for Voltage correction application

Communication Expertise on		
<ul style="list-style-type: none"> <li>HSBY</li> </ul>	<ul style="list-style-type: none"> <li>Modbus</li> </ul>	<ul style="list-style-type: none"> <li>DNP</li> </ul>
<ul style="list-style-type: none"> <li>ERIO</li> </ul>	<ul style="list-style-type: none"> <li>Modbus TCP/IP</li> </ul>	<ul style="list-style-type: none"> <li>IEC61580</li> </ul>







# SOLAR



Best in Class Project
▪ Today Home – 70 MW
▪ Hindustan
▪ Videocon
▪ Aston Field
▪ AIC Solar
▪ BHEL - Ranipet

Application Expertise On	
▪ PV	▪ Off-Grid
▪ Roof Top	▪ On-Grid

Solution Expertise On	
▪ PLC	▪ SMB
▪ SCADA	▪ Web Client
▪ Fuse Box	▪ WMS



Key

- Total 600 MW Install Base ranging from 1 MW to 75 MW

Communication Expertise On			
• RTU	▪ Wireless	▪ Modbus	▪ IEC-104
• RIO	▪ Fibre Optic Network	▪ Modbus TCP/IP	▪ IEC 61850





# POWER MANAGEMENT



Best in Class Project	Application Expertise On	Solution Expertise On
<ul style="list-style-type: none"> <li>JK TYRES</li> </ul>	<ul style="list-style-type: none"> <li>Energy Management System</li> </ul>	<ul style="list-style-type: none"> <li>PLC</li> </ul>
<ul style="list-style-type: none"> <li>CMC</li> </ul>	<ul style="list-style-type: none"> <li>Breaker Control System</li> </ul>	<ul style="list-style-type: none"> <li>SCADA</li> </ul>
<ul style="list-style-type: none"> <li>BMW</li> </ul>	<ul style="list-style-type: none"> <li>Sub Station Automation</li> </ul>	<ul style="list-style-type: none"> <li>PME</li> </ul>
<ul style="list-style-type: none"> <li>Danieli</li> </ul>	<ul style="list-style-type: none"> <li>Water Monitoring</li> <li>Diesel Monitoring</li> <li>Steam Monitoring</li> </ul>	<ul style="list-style-type: none"> <li>PSE</li> <li>ION</li> </ul>



**Best**

- Integrated 1300 Meters and 700 Breakers in single plant
- First Hospital connected with Energy/Water and Diesel utilization

Communication Expertise on		
<ul style="list-style-type: none"> <li>HSBY</li> </ul>	<ul style="list-style-type: none"> <li>Modbus</li> <li>Modbus TCP/IP</li> </ul>	<ul style="list-style-type: none"> <li>IEC61850</li> </ul>





# MECHANICAL



Best in Class Project	Application Expertise On	Solution Expertise On
<ul style="list-style-type: none"> <li>ISRO SHRIHARIKOTA</li> </ul>	<ul style="list-style-type: none"> <li>MECHANICAL WEIGHING SYSTEM</li> </ul>	<ul style="list-style-type: none"> <li>WEIGHING SYSTEM</li> </ul>
<ul style="list-style-type: none"> <li>VSCC</li> </ul>	<ul style="list-style-type: none"> <li>CONTROL PANELS</li> </ul>	<ul style="list-style-type: none"> <li>INSTRUMENTATION</li> </ul>
<ul style="list-style-type: none"> <li>BMW</li> </ul>	<ul style="list-style-type: none"> <li>ERGONOMIC DESK &amp; WORK STATION</li> </ul>	<ul style="list-style-type: none"> <li>TESTING</li> </ul>
<ul style="list-style-type: none"> <li>Danieli</li> </ul>		<ul style="list-style-type: none"> <li>PRODUCTION</li> <li>DEVELOPMENT</li> </ul>



Best

• Manufactured & Supplied More than > 10,000 Consoles & Work station Pan India & Exports

• Manufactured & Supplied More than > 10,000 Consoles & Work station



Certified Form 3B Construction



## Human Strength:

- Work force: 150, Administrative Staff:25, Quality: 08 and Design: 07

## Manufacturing Facility:

- Amada CNC Turret Punch Press: 2
- Amada CNC Bending Machine: 2
- Shearing machine: 1.
- Power Coating Plant with 7 tank pre-treatment facility
- Epoxy Floored Electrical Integration Area with Material handling Equipment's.
- Dedicated QC Team for Both Mechanical & Electrical Division.
- Hosts of material handling including cranes, pallet trucks & material lift
- Grinding, Mig & stud welding and Radial Drilling Machines
- Calibrated instruments, tools & fixtures
- Redundant Power Generators – 125, 75 & 63 KVA
- ERP, Solid Works, E-plan, Customized Engineering & Estimation software to simplify the Process.
- Test Benches for various power parameters





### Panel Integration



Total Area: 40000 Sqft  
 Power: 67 HP  
 DG backup: 125 KVA  
 UPS: 20 KVA

### Paint Shop



5000 Sqft  
 40 HP  
 25 KVA

### Panel Manufacturing



5000 Sqft

Panel integration activity & Staging of cabinets has an area of 10,000 sq. ft. spread over in two floors vertically, With a manufacturing capacity & staging of over 350 cabinets per month.



# GALLERY





# FOR MORE INFORMATION



## Head Office:

**Bangalore :** # A-274, 6<sup>th</sup> Main, 2<sup>nd</sup> Stage, Peenya Industrial Area  
Bangalore - 560058 | Ph: +91 80 2836 0515 /40911861  
Email: [sales@adarshaautomation.com](mailto:sales@adarshaautomation.com)

## Regional offices:

**Chennai:** #1050, 1st floor, I Block, 35<sup>th</sup> street, 18th Main Road,  
Anna Nagar West, Chennai - 600 040 | Ph: +91 9841022070|044-48621070  
Email: [chennaisales@adarshaautomation.com](mailto:chennaisales@adarshaautomation.com)

**Kolkata:** B/171, 3<sup>rd</sup> Floor, Survey Park, Kolkata-700 075  
Email: [eastsales@adarshaautomation.com](mailto:eastsales@adarshaautomation.com)

 [www.facebook.com/acapl.bangalore](https://www.facebook.com/acapl.bangalore)  
 <https://twitter.com/adarshaacapl>  
 [www.linkedin.com/in/acapl](https://www.linkedin.com/in/acapl)

